

WHITE MARSH VOLUNTEER FIRE COMPANY

2017



# Annual Report



*A Non-Profit Serving the Community for over 70 years*

## Table of Contents

Table of Figures	3
From the President	4
From the Captain	5
Company Information	6
Board of Directors	7
Financial Summary	8
Statement of Financial Position as of June 30, 2017	8
Income and Expenses	9
Apparatus	10
Call Statistics	11
Membership Information	12
Training	13
Promotions	14
Community Outreach	15
Capital Project	16
New Station Capital Project Donors and Sponsors	17
Fundraising	18
Membership Spotlight	19
Notable Events	20
Notable Incidents	21
In Memory of William Schlogel	26
Contact Information	27

## Table of Figures

Figure 1: GuideStar Gold Seal of Transparency _____	8
Figure 2: Engine 202, Engine 201, Ambulance 203 _____	10
Figure 3: Yearly Call Volume _____	11
Figure 4: Flashover Simulator at FRA _____	13
Figure 5: Live Structure Ladder Training _____	13
Figure 6: Live Structure Training Evolutions _____	14
Figure 7: Pump Training _____	14
Figure 8: Classroom Training _____	14
Figure 9: Station Relocation Project Information _____	16
Figure 10: Capital Campaign Logo _____	16
Figure 11: Donation Uses _____	18
Figure 12: Deonte Terry Receiving Award _____	19
Figure 13: Baltimore County Fireman's Association Logo _____	19
Figure 14: Comptroller Franchot and Councilwoman Bevins Meet With Members. _____	20
Figure 15: New Station Construction Begins _____	20
Figure 16: Member Participating in 9/11 Memorial Run _____	20
Figure 17: Three Members Deployed to Texas, Florida and Puerto Rico for Hurricane Response _____	20
Figure 20: Boat Fire, Wilson Point, 3/15/2017 _____	21
Figure 21: Dwelling Fire, Joppa, 4/20/2017 _____	21
Figure 22: Dwelling Fire, Dunrovin Ln, White Marsh 2/4/2017 (a) _____	21
Figure 23: Dwelling Fire, Dunrovin Ln, White Marsh, 2/4/2017 (b) _____	21
Figure 24: Dwelling Fire with Fatality, Beech Ave, Fullerton, 4/25/2017 _____	22
Figure 25: Tire Store, Pulaski Hwy, Rosedale, 2/22/2017 _____	22
Figure 26: Apartment Fire, Rosedale, 12/8/2017 (a) _____	22
Figure 27: Apartment Fire, Rosedale, 12/8/2017 (b) _____	22
Figure 28: Car Carrier Fire, I-95, 12/8/2017 (a) _____	22
Figure 29: Car Carrier Fire, I-95, 12/8/2017 (b) _____	22
Figure 30: Shed Fire, Carrington Dr, White Marsh, 6/29/2017 _____	23
Figure 31: Rehab Unit at Dwelling Fire, Parkville, 2/11/2017 _____	23
Figure 32: Dwelling Fire, Abingdon, 11/23/2017 _____	23
Figure 33: Dwelling Fire, Michaela Ct, Parkville, 5/9/2017 _____	23
Figure 34: Medevac, Philadelphia Rd, White Marsh, 2/7/2017 _____	24
Figure 35: Street Sweeper Crash, 5/14/2017 _____	24
Figure 36: Dwelling Fires in White Marsh and Chase, Auto Fire in White Marsh _____	25
Figure 37: In Memory of William "King Bill" Schlogel _____	26
Figure 38: William "King Bill" Schlogel _____	26
Figure 39: WMVFC Logo _____	27
Figure 40: WMVFC Morale Logo _____	27

## From the President

The 2017 year brought exciting change to the organization and the community, with the commencement of the new station construction. Although the process has been challenging and dates back to 2012, the hard work of many members as well as our community was finally brought to reality. This project has allowed the organization to develop closer ties with those who live and work in our community. We have had the opportunity to meet with many individuals, groups, and businesses to seek out their feedback and establish professional relationships for many years to come.

Operating a volunteer fire and EMS company takes an army of people within the organization to train, respond to emergencies, handle administrative work, raise money, and much more. In addition to the internal army of people, we have continued success because of our supportive and engaged community. A successful non-profit is one that can effectively carry out its mission with the support of its stakeholders, in this case, our community.

In return for our community that stands by us, we present this annual report to show you what our organization does day in and day out. It provides you with a snapshot of where your hard earned donation goes, the amount of personnel required to provide emergency services, the organizational growth, and our behind the scenes operations. I hope you find this information valuable and I look forward to another successful year in 2018 with collaboration from you, our *community*.

Kevin C. Palmer Jr.  
President

## From the Captain

2017 brought a number of working or complex incidents for the White Marsh Volunteers. We have remained fortunate for the members of our community who donate their time and risk their lives in order to protect others.

The line staff (officers in charge of emergency operations) oversaw a tremendous amount of newly trained firefighters and EMTs. The initial training, in excess of 150 hours, is just an introduction to emergency response operations. All of our members should be commended for their efforts.

In fact, our 120+ volunteer responders went to over 4,400 alarms in 2017. This was an increase of over 500 calls for service in 2017 compared to 2016, and 400 more than our last highest recorded number in 2015.

All sectors (fire, ems, and rehab) had their busiest year on record. The challenges of our growing response area are many. We have rural, suburban, dense residential, dense commercial, and industrial challenges for which we are responsible to safeguard. We are optimistic about our ability to fulfill our mission in the future with the many partnerships we have forged with our citizens, politicians, and business owners.

*Patrono's no stri defero...Protectors of our community.*

Have a safe 2018!

Rick Blubaugh III  
Vice President of Operations

## Company Information

The White Marsh Volunteer Fire Company (WMVFC), a non-profit organization, has been serving the community for over 70 years. Formerly known as the Cowenton Volunteer Fire Company, the organization was founded in 1943 and incorporated in 1945. The company was formed during World War II as a civil defense unit, and then transitioned into a fire company. The company has evolved over the years to accommodate the growing geographical response district from a once rural farming region to an urbanized destination.

The company operates strictly with volunteer personnel that include administrative positions to operational responders. The company, when founded, had 12 members. The company now has 170 volunteer personnel to meet the needs of the community. Membership includes individuals from all walks of life and backgrounds that fulfill positions of firefighters, EMTs, paramedics, incident rehab personnel, and administrative support personnel. Due to the growing demands of personnel accountability, maintenance of training records, and other administrative tasks, the company hired a part-time administrator at the end of 2016 in order to maintain records and files to comply with local, state, and federal standards.

The company operates out of one station, although currently a new station is being constructed on land donated by General Motors. The current station resides on land donated by the Carroll, Bickel, and Gambrill families.

The company is an independent 501(c)(3) non-profit organization with an elected board of directors, corporate officers, and appointed staff members. The company is a member of the Baltimore County Volunteer Fireman's Association (BCVFA) and the Maryland State Fireman's Association (MSFA). The BCVFA dictates standards and policies for the operation of 28 volunteer fire and EMS companies in Baltimore County. The primary mission of the WMVFC is to provide a service to the citizens of Baltimore County as a component of the Baltimore County Fire Department (BCoFD). The BCoFD is a combination department of career and volunteer companies. When volunteer personnel of the WMVFC respond to 911 calls, they fall under the auspice of the BCoFD and are expected to adhere to standard operating procedures (SOPs) set forth by the Chief of the Baltimore County Fire Department.

***“More than 2,000 citizens volunteer in the fire service... Though volunteer companies are independent, private corporations, Baltimore County has a true joint fire service, with dedicated career and volunteer responders working together at emergency scenes every day on behalf of our citizens.”***  
[baltimorecountymd.gov/fire](http://baltimorecountymd.gov/fire)

## Board of Directors

The White Marsh Volunteer Fire Company board of directors is made up of eleven members, three of which are members of the community. The President and Board Chair appoint the three community board members each year. The board of directors is responsible for approving the President's (administrative) and Captain's (emergency operations) budget, ensuring fiscal responsibility throughout the year, overseeing discipline, forecasting future capital needs, reviewing statistical data that is pertinent to operations, and supporting the administrative and operations line staff throughout the year.

The White Marsh Volunteer Fire Company appointed community board members several years ago after conducting a feasibility study with the community. The addition of community board members has been a tremendous asset to the organization. Their knowledge, experience, and background in business operations, financial management, personnel management, and community involvement allows us to function as an effective non-profit organization.

The three community board members for 2017 were:

- Les Richardson
- Robert Romadka Jr.
- Chris Montcalmo

The leadership of the organization is responsible for overseeing an annual operating budget of \$450,000 and assets that are now valued over \$4 million (apparatus + land). In addition, over the last three years the leadership has been managing a capital budget of \$6.7 million. Our organization prides itself in having leadership with advanced education, in order to better manage the daily operations of a non-profit and to appropriately provide emergency services to our community.



## Financial Summary

### STATEMENT OF FINANCIAL POSITION AS OF JUNE 30, 2017

ASSETS

Cash and cash equivalents	\$247,538
Fixed assets	1,986,351
<b>TOTAL ASSETS</b>	<b>2,233,889</b>

LIABILITIES

Vehicle loans payable	124,923
<b>TOTAL LIABILITIES</b>	<b>124,923</b>

NET ASSETS

Unrestricted	2,043,739
Restricted	65,227
<b>TOTAL NET ASSETS</b>	<b>2,108,966</b>

**TOTAL LIABILITIES AND NET ASSETS 2,233,889**

*The White Marsh Volunteer Fire Company conducts annual financial agreed upon procedures to ensure fiscal responsibility and proper financial handling throughout the organization. This allows for proper handling of all cash assets from donors, fundraising events, grants, and subsidies. The White Marsh Volunteer Fire Company received the Gold Seal of Transparency from GuideStar for transparency and financial accountability.*



Figure 1: GuideStar Gold Seal of Transparency



## TO OUR COMMUNITY

### INCOME AND EXPENSES

#### INCOME (REVENUES, GAINS & OTHER SUPPORT)

Subsidies	\$131,000
Fund drives	98,409
Fundraising	93,893
Miscellaneous	13,774
<b>TOTAL INCOME</b>	<b>337,076</b>

#### EXPENSES

##### ADMINISTRATIVE EXPENSES

Utilities	19,692
Insurance	35,620
Building maintenance and repairs	16,956
Rehab supplies	9,388
General administrative	59,908
Fund drive	18,230
Fundraising (large portion is Christmas trees)	45,369
Vehicle loan payments	11,709
<b>TOTAL ADMINISTRATIVE EXPENSES</b>	<b>216,872</b>

##### OPERATING EXPENSES

Apparatus maintenance	51,729
EMS/personal protective equipment (PPE)/small tools	6,154
Company training	4,365
Miscellaneous	6,352
<b>TOTAL OPERATING EXPENSES</b>	<b>68,600</b>

**TOTAL EXPENSES** **285,472**

**CHANGE IN NET ASSETS** **51,604**

## Apparatus

The company currently operates with eight pieces of apparatus. The company has worked diligently to pay off all outstanding apparatus debt with the exception of two units: a 2017 Chevrolet Silverado and the Canteen unit, which was obtained through the merger with Central Alarmers in 2016. A majority of the loan payments are paid through state of Maryland funds from the 508 Funding for Fire and Ambulance Departments program. In order to purchase equipment, the company must provide a 20% down payment. Over the last three years, the company utilized reserve funds to pay off outstanding apparatus and building loans to prepare for the upcoming new station construction loan.

During 2017 the following upgrades were completed on the apparatus:

- Utility 205 was replaced with a 2017 Chevrolet Silverado
- The existing Utility 205 was converted into a new brush unit, replacing a 1990s two-door Dodge pickup
- Rehab 154, a Ford pickup, was sold because of lack of use



Figure 2: Engine 202, Engine 201, Ambulance 203

## Call Statistics

In 2017, the WMVFC experienced our busiest year in history for responses to emergencies. Volunteer members responded to 4,407 calls for service.

	Medic	Fire	Rehab
<b>2017 Responses</b>	2,585	1,656	166
<b>Busiest Time of Day</b>	Noon – 8:00 PM	Noon – 5:00 PM	N/A
<b>Busiest Day of Week</b>	Monday	Thursday	N/A
<b>Busiest Response Area</b>	20-2 (Includes: Kaiser Permanente, Patient First, Johns Hopkins)	20-12 (Campbell Blvd area)	N/A
<b>Furthest Response</b>	Dundalk	Dundalk	Catonsville
<b># of Apparatus</b>	ALS Medic Unit (1) + ALS equipped Chevrolet Suburban (1)	Engines (2) + Brush Unit (1) + 4x4 Utility (1)	Canteen Truck (1) + Firefighter Rehab Unit (1)

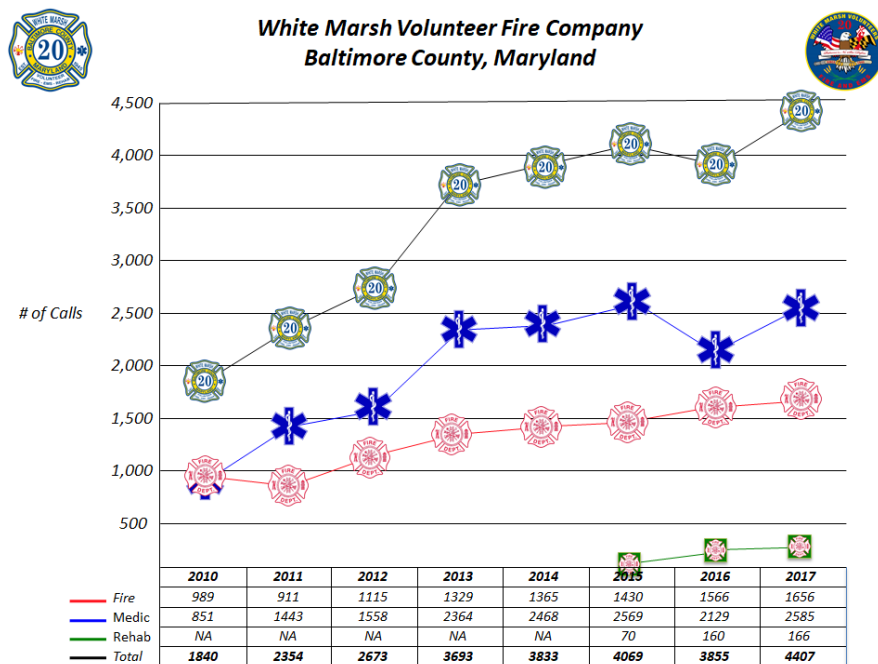


Figure 3: Yearly Call Volume

## Membership Information

The White Marsh Volunteer Fire Company has 170 volunteer members. These members have dedicated over 60,000 hours of service to the community in 2017. Without a robust and dedicated membership, it would be difficult to carry out our mission and serve the community. Our youngest members are 13 years of age, while our oldest member is 84 years of age. Our membership is broken down between operational, administrative, and support services personnel, as well as cadets.

Operational personnel make up the largest portion of our membership, as they are firefighters, EMTs, and Paramedics that respond to emergencies in our community.

- Firefighters: 62
- Engine Drivers: 30
- Engine Officers: 22
- EMTs: 39
- Paramedics: 18

Support services personnel consists of 25 personnel who provide rehab services to long-term fire and police incidents. These members respond to incidents throughout Baltimore County providing food, beverages, climate-controlled environment, restrooms, and medical rehab equipment for long-term incidents such as working fires and hostage situations.

While our operational and support service personnel are the ones who you see when calling 9-1-1, we have a large pool of administrative personnel who conduct a tremendous amount of work behind the scenes. They are the ones who keep our non-profit organization running. These individuals handle company finances, bill payment, human resources, fundraising, public relations/community outreach, recruitment/retention, building maintenance, and vehicle maintenance. We currently have 22 administrative members.

Lastly, we have a cadet/junior program for kids older than 13 but have not reached their 16<sup>th</sup> birthday. These young men and women learn about the fire service, first aid, CPR, basic suppression education, team building and much more.

## Training

Training is an extremely important component to our organization. Our membership is held to high standards in order to provide the best service to our community. The membership spends over thousands of hours training which includes state certifications, and in-station training. New members are required to obtain roughly 200 hours of certified training before they are eligible to ride the apparatus.

Some notable training events over the 2017 year includes:

- Annual Hazmat Refresher (required for all riding members)
- "First In" Class
- General Motors Table Top Exercise
- Live Structure Training
- Situational Awareness for First Responders
- Flashover Simulator and Forcible Entry at the Baltimore County Fire-Rescue Academy
- Urban Air Trampoline Park Tour
- New Greenleigh Apartment Tour
- New Eastern Family Resource Center Tour



Figure 4: Flashover Simulator at FRA



Figure 5: Live Structure Ladder Training



## Promotions

During the 2017 year, the following individuals were cleared as essential personnel or promoted into advanced positions:

- Anthony Backhaus - Firefighter
- Ayanna Matthews - ALS Attendant, Medic Driver
- Ben Oliver - Firefighter
- Crystal Weaver - BLS Attendant
- Dan Purdie - Firefighter
- Daniel Dietrich - FADO
- Deonte Terry - FADO, Fire Officer, BLS Attendant, Medic Driver
- Erin Connelly - IV Technician
- Jason Moore - Firefighter, FADO
- Jerry Schloer - Rehab Unit Driver
- John Becker - Utility and Brush Driver
- Laura Connelly - FADO
- Mark Oliver - Medic Driver
- Matt Bowling - Firefighter
- Robert Oremán - Firefighter, FADO
- Ron Young - Rehab Unit Driver
- Scott Koogle - FADO
- Zachary Weideck - IV Technician, BLS Attendant, Medic Driver, FADO, Fire Officer



Figure 6: Live Structure Training Evolutions



Figure 7: Pump Training



Figure 8: Classroom Training

## Community Outreach

WMVFC members participated in 46 community relations and public fire safety education events throughout 2017. This number does not include those individual and organized groups who stop in the station to have a tour and see the apparatus. Community outreach and education is an important component of our organization, as it allows our volunteer personnel to interact with the community while not on an emergency call. We realize that a majority of our interaction is through emergency responses; however, education and events are equally important.



WMVFC also escorted Santa Claus to over 30 different neighborhoods over the span of seven consecutive nights. This event alone takes approximately five hours of planning and roughly 21-25 hours to conduct the week before Christmas.

Some notable community outreach events include:

- BCoFD Recruit Class Graduation
- Engine Transfer to Jacksonville Volunteer Fire Company 47
- BCoFD Promotion and Awards Ceremony
- Fallen Heroes Day at Dulaney Valley Memorial Gardens
- Veterans Memorial Service at Holly Hills Memorial Gardens
- Kingsville Volunteer Fire Company 48 Groundbreaking
- Baltimore Police Detective Sean Suiter Funeral
- Perry Hall Middle School Color Run
- Perry Hall Improvement Association (PHIA) Easter Egg Hunt
- Child Vehicle Safety Seat Installation and Check Events
- AAA Touch-a-Truck
- Bowerman-Loreley Beach Community Association Annual Picnic
- Perry Hall-White Marsh Business Association (PHWMBA) Town Fair
- Community College of Baltimore County (CCBC) Essex Graduation
- Baltimore County Public Schools (BCPS) Back to School Festival at Boscov's White Marsh
- Kingsville Independence Day Parade
- The Avenue at White Marsh Holiday Parade
- Wise Avenue Volunteer Fire Company 75th Anniversary Parade
- Perry Hall Library Safety Event
- Chick-fil-A Safety Night



## Capital Project

During 2017, we saw major progress on our capital project, which began back in 2012. After several years of negotiations with General Motors, community input, and fundraising, we were prepared to start construction. At the beginning of September, the first shovel hit the ground to begin the 12-month long project. The general contractor was awarded to North Point Builders, with Manns-Woodward Studios being the principle architect. Estimated completion of the project is August 2018.

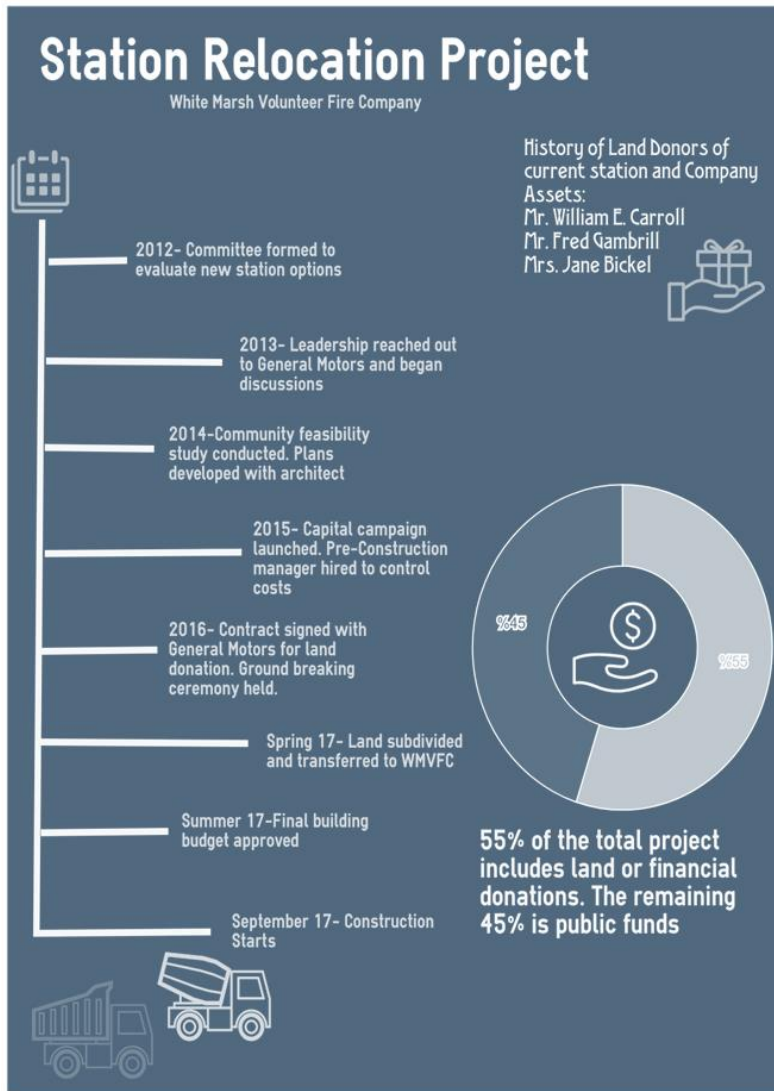


Figure 9: Station Relocation Project Information



Figure 10: Capital Campaign Logo

### Finances

- Baltimore County Volunteer Fireman’s Association: \$2.8 million loan + \$500,000 grant
- Baltimore County Government: \$1.7 million grant
- State Bond Bills: \$225,000
- Community Contributions and Company Funds: \$1.5 million
- Land Donation by General Motors: \$2.6 million

### Total Building Cost

- \$5.9 million
- Legal Fees, Architect Fees, County and State Fees, Permits, Surveys

### Total Project Cost

- \$6.7 million investment into the community

## New Station Capital Project Donors and Sponsors

### Land Donation Sponsor



- General Motors

### Named Room and Primary Sponsors



- ACF Environmental
- Bobby's Portable Restrooms
- Bowerman-Loreley Beach Community Association
- Days Cove Reclamation Company
- Family of Steve Babikow
- Fields at Perry Hall HOA
- Greenleigh at Crossroads
- JAC Communications
- Koons Chevrolet White Marsh
- Mariann and Kevin Palmer Sr.
- Maryland State Bond Bill
- Parker, Pallett, Slezak & Russell, LLC
- Perry Hall Improvement Association
- Perry Hall White Marsh Business Association
- Precision Concrete
- Republic Services
- Residential Capital Campaign
- Rosedale Federal Savings & Loan Association
- The Romadka Family
- White Marsh Retail LLC
- Wirtz and Daughters
- J. Gibson Mcllvain Company
- WMVFC Board Chair Breach, Captain Blubaugh, President Palmer
- WMVFC Board of Directors
- Karen Thomas
- Richardson Farms Craft Show
- Wilmot Modular Structures
- Joppa-Chapel Investments

### White Helmet Sponsors



- Cargill Salt
- Comeq
- Double T Diner White Marsh
- General Motors Car Show
- James Clements
- Jerry's Toyota

### Blue Helmet Sponsors



- 84 Lumber
- Accent Printers
- Allstate Insurance Company
- Baltimore County Business Association
- Brooks Ramsey Motors & RV
- Charles Schultz
- Chesapeake Gateway Chamber of Commerce
- Classic Body and Fender
- David Madden
- Dorothy Hinant
- Ferguson Water Works
- Global Substation Services (GSS)
- Kelvin Antill
- Lee Foundation Co
- Maryland Performance Specialties Car Show
- Metro Bobcat Inc.
- People's Bank
- Peter Alan Terry
- Sierra Pacific Mortgage -White Marsh
- Sleepy Hollow Community
- South Perry Hall Improvement Association
- Stephan Steinberg

### Red Helmet Sponsors



- Dennis Robinson Jr.
- First Home Mortgage
- Jack Amrhein
- Royal Farms Corporation
- Silver-Top Manufacturing
- Tic Gums
- Tom and Carol Forwood

## Fundraising

As a non-profit organization, we rely heavily on donations and fundraising events to help cover our operational costs. The infographic to the right shows where a large portion of our money goes. The top costs include loan payments, building maintenance, apparatus maintenance, and utilities.

Some expenses are reimbursable from Baltimore County and/or provided for free (such as training through the Maryland and Fire Rescue Institute).

Our major annual fundraisers are:

- EMS and Fire mailer
- Christmas Tree Sales
- Bull and Shrimp Feast

In addition, we are very fortunate to have a supportive residential and business community that hosts events on our behalf to include:

- Richardson Farms Craft Fair
- PHWMBA Taste and Grapes
- Stop, Drop, and Eat Food Truck Event
- Octoberfest at Richardson Farms
- Paint Nite by SERVPRO of Perry Hall / White Marsh

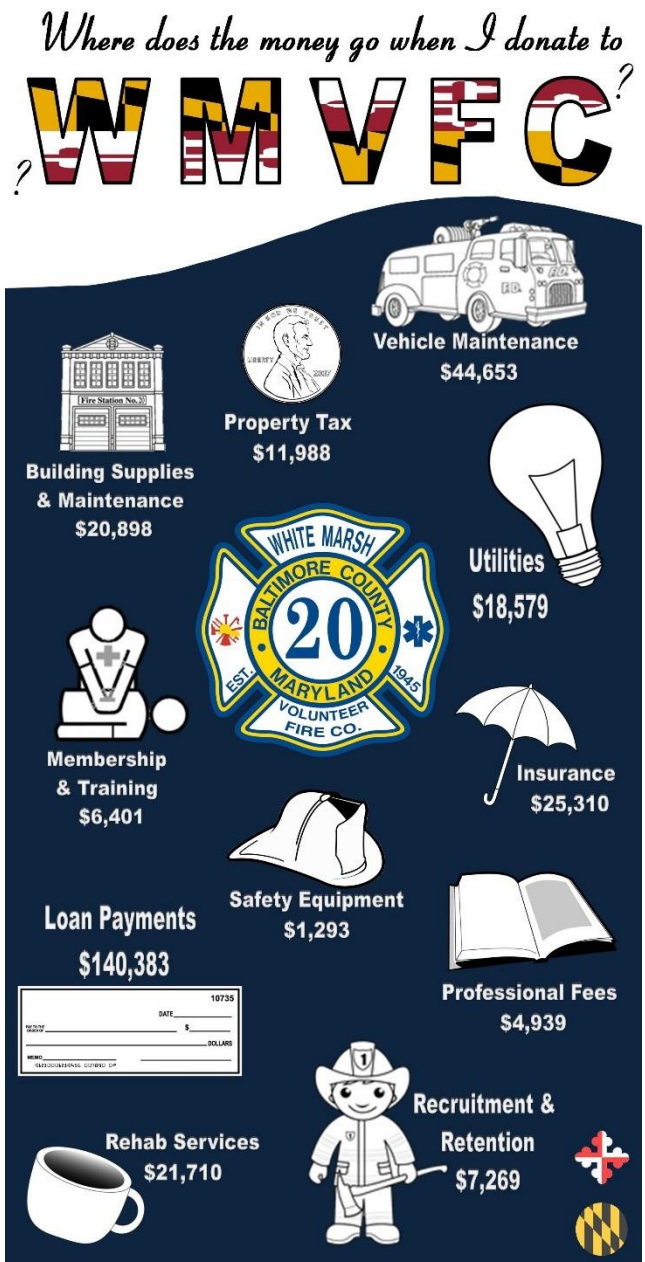


Figure 11: Donation Uses

## Membership Spotlight

### 2017 Awards:

- Chesapeake Gateway Chamber of Commerce Hometown Hero - Deonte Terry
- Young Firefighter of the Year - Deonte Terry
- President's Award - Jo Ann Wolfe



Figure 12: Deonte Terry Receiving Award

### Years of Service within the Baltimore County Volunteer Fireman's Association:

#### 10 Years of Service:

- Brian Yingling
- Mark Lundin
- Kelly Murphy

#### 15 Years of Service:

- Barry Betts
- Rick Blubaugh III
- Brian Cashion
- Frank Ward
- Bill Wychulis

#### 20 Years of Service:

Kay Simmons

#### 25 Years of Service:

- Ken Hughes

#### 30 Years of Service:

- Richard Breach Sr.



Figure 13: Baltimore County Fireman's Association Logo



## Notable Events

There were numerous notable events in which White Marsh Volunteer Fire Company and members hosted, participated in, or attended during 2017.

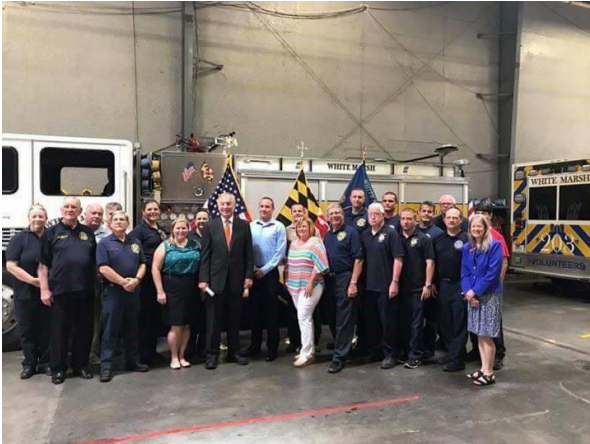


Figure 14: Comptroller Franchot and Councilwoman Bevins Meet With Members.



Figure 15: New Station Construction Begins

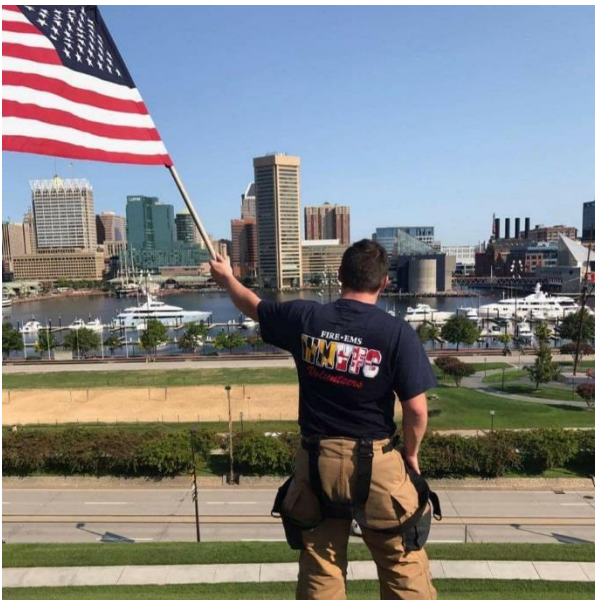


Figure 16: Member Participating in 9/11 Memorial Run



Figure 17: Three Members Deployed to Texas, Florida and Puerto Rico for Hurricane Response

## Notable Incidents

During 2017, White Marsh Volunteer Fire Company responded to a wide variety of emergency and non-emergency incidents in White Marsh and other sections of eastern Baltimore County. Responses were also made the Joppa and Abingdon areas of Harford County via mutual aid assistance. Following is just a sampling of some notable incidents.



**Figure 18: Boat Fire, Wilson Point, 3/15/2017**



**Figure 19: Dwelling Fire, Joppa, 4/20/2017**



**Figure 20: Dwelling Fire, Dunrovin Ln, White Marsh 2/4/2017 (a)**



**Figure 21: Dwelling Fire, Dunrovin Ln, White Marsh, 2/4/2017 (b)**





Figure 22: Dwelling Fire with Fatality, Beech Ave, Fullerton, 4/25/2017



Figure 23: Tire Store, Pulaski Hwy, Rosedale, 2/22/2017



Figure 24: Apartment Fire, Rosedale, 12/8/2017 (a)



Figure 25: Apartment Fire, Rosedale, 12/8/2017 (b)



Figure 26: Car Carrier Fire, I-95, 12/8/2017 (a)



Figure 27: Car Carrier Fire, I-95, 12/8/2017 (b)





Figure 28: Shed Fire, Carrington Dr, White Marsh, 6/29/2017



Figure 29: Rehab Unit at Dwelling Fire, Parkville, 2/11/2017



Figure 30: Dwelling Fire, Abingdon, 11/23/2017



Figure 31: Dwelling Fire, Michaela Ct, Parkville, 5/9/2017

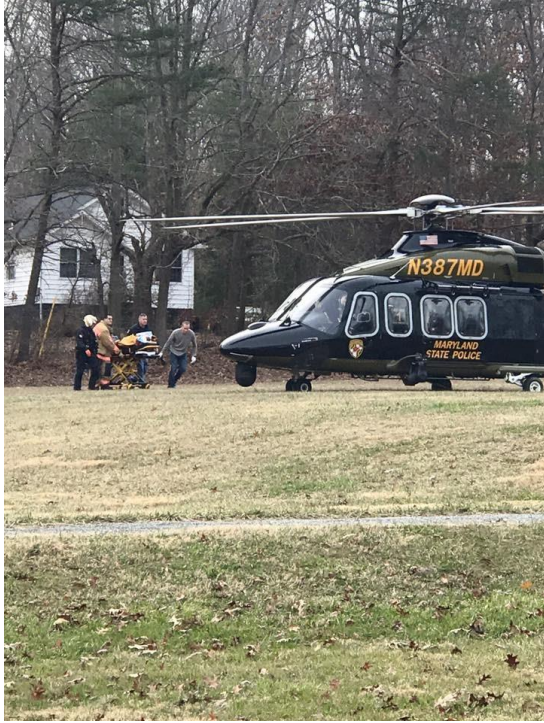


Figure 32: Medevac, Philadelphia Rd, White Marsh, 2/7/2017



Figure 33: Street Sweeper Crash, 5/14/2017





Figure 34: Dwelling Fires in White Marsh and Chase, Auto Fire in White Marsh

## In Memory of William Schlogel

Mr. William (Bill) Schlogel joined the Cowenton Volunteer Fire Company on January 17, 1963 at the age of 29, and immediately completed his fire and first aid training. "King Bill" as he was affectionately known, served the company as Secretary and Sergeant, as well as President for three terms. He was also a delegate to the Baltimore County Fireman's Association for 38 years. King Bill earned Life Membership in 1973, an honor he carried proudly.

During his presidency in 1967, Captain Charles Hopwood approached Bill indicating that Engine 202 was past its useful life and that a new engine was needed. Bill analyzed the company funds, and in 18 months, had amassed enough cash for a new pumper. Bill again repeated this feat four years later when cash was paid for a replacement Engine 201.

As fate would have it, Bill was driving Captain Hopwood the evening of August 1, 1971 when four firefighters were lost in a horrendous storm that brought over 10 inches of rain to the White Marsh community in less than two hours. Hopwood was one of the firefighters lost that evening. King Bill insisted that he again drive Hopwood to his final resting spot. In traditional Fire Department fashion, Bill drove Hopwood atop the engine he had lobbied Bill so hard for. After the loss of Hopwood, Bill led the charge to name Engine 202 in Hopwood's honor. The bell was engraved with Hopwood's name and remains a part of the company to this day. This tragic event carried a heavy load on Bill for many years.

Bill was married to Mrs. Jean Schlogel for over 50 years with whom he raised three beautiful daughters. Bill was ever dedicated to his family, his church and his fire department. Everyone suffered a great loss at his passing in 2017 and his dedicated service and active humor will be sorely missed around the station.

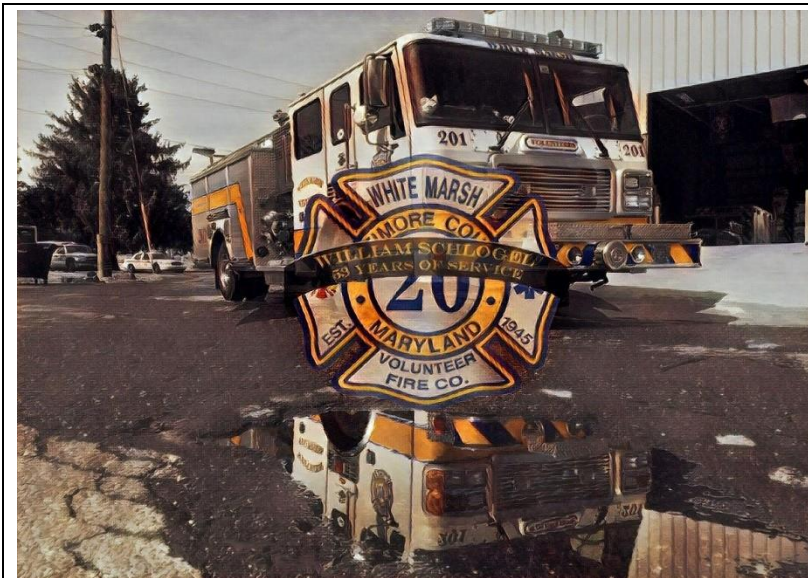


Figure 35: In Memory of William "King Bill" Schlogel



Figure 36: William "King Bill" Schlogel

## Contact Information

**White Marsh Volunteer Fire Company  
Baltimore County Station 20**

Physical address (through August 2017) 5419 Ebenezer Road  
White Marsh, MD 21162

Physical address (starting September 2018) 10331 Philadelphia Road  
White Marsh, MD 21162

Mailing address PO Box 309  
White Marsh, MD 21162-0309

Phone 410-335-5112

Fax 410-335-1842

Emergency 911

Website [wmvfc.org](http://wmvfc.org)

Facebook [facebook.com/wmvfc](https://facebook.com/wmvfc)

Twitter [twitter.com/wmvfc](https://twitter.com/wmvfc)

Instagram [instagram.com/wmvfc](https://instagram.com/wmvfc)

Email (membership) [membership@wmvfc.org](mailto:membership@wmvfc.org)

Email (public relations) [pr@wmvfc.org](mailto:pr@wmvfc.org)



Figure 37: WMVFC Logo



Figure 38: WMVFC Morale Logo