



# 2019 Annual Report

**Message from the Board Chairperson ..... 1**  
**Message from the President ..... 1**  
**Message from the Captain ..... 1**  
**About Us ..... 2**  
**Our Services ..... 5**  
**Our Constituents ..... 5**  
**Our First Due Coverage Area ..... 6**  
**Our Responses ..... 7**  
**Our 2019 ..... 8**  
**Our Apparatuses ..... 9**  
**Our Members ..... 10**  
**Our Finances ..... 11**

**White Marsh  
Volunteer Fire Company**  
10331 Philadelphia Road  
White Marsh, MD 21162  
410-933-0100  
wmvfc.org

# MESSAGE FROM THE BOARD CHAIRPERSON

---

As another year passes, the Board of Directors can look back with pride on our organization's continued success. Our board is dedicated to the belief that success lies within the organization's leadership and guiding mission. The board serves as an oversight for our leaders and assists with establishing a beacon forward in alignment with our mission statement and guiding principles.

Our board's strength comes from its diversity. With a balance of community members and internal organizational leaders, all of our stakeholders are well represented. The background of our board members is impressive. We have attorneys, architects, business owners, business consultants, CPAs, fundraising, financial and nonprofit experts, and emergency-service professionals who bring a wealth of experience and solutions to the table.

The Board of Directors looks forward to guiding the organization to further success in 2020.

Michael Connelly

# MESSAGE FROM THE PRESIDENT

---

Another year has passed and with that, we have experienced many new traditions. In 2019, we spent our first full year in the new station and finally had the opportunity to invite our community into our home. With our larger footprint, we were able to bring back our annual open house and our holiday train garden. Additionally, we hosted several food truck nights throughout the spring and summer. It is exciting to see such a supportive and engaged community. Without the support of our community, it would be difficult to carry out our mission. During 2019, the organization was also fortunate to purchase a new medic unit and a new fire engine in order to better serve the needs of our growing community.

In addition to an engaged community, we have a tremendous and dedicated membership. More than 200 members volunteer their time in order to answer the call of our community through emergency responses, incident support and rehab, and behind the scenes administrative functions. In 2019, we responded to 4,202 calls. I look forward to an exciting year in 2020.

Kevin C. Palmer Jr.

# MESSAGE FROM THE CAPTAIN

---

Just as 2018 was a notable year with the construction of our new facility, 2019 also continued the trend of much needed upgrades. Thanks to the support of the community, we were able to replace our aging ambulance with a new unit designed with the safety of our personnel in mind. Restraint systems in the patient compartment, increased emergency lighting, as well as many other components work to keep our personnel and patients safe. We were also fortunate enough to replace an aging fire engine with a new Seagrave 750-gallon pumper that ensures reliability and safety, allowing us to better serve the community.

Our company continues to have great pride in the well-trained personnel who we send to emergencies. We continue to grow—just like the community. We look forward to continued service and invite everyone to continue supporting our important mission!

Rick Blubaugh

# About Us

White Marsh Volunteer Fire Company is a 501(c)(3) nonprofit organization that provides fire, rescue and emergency medical services to the citizens of White Marsh, Perry Hall, Nottingham and other communities within Baltimore and Harford counties. WMVFC operates two engines, an advanced life support ambulance, a four-wheel drive brush truck, two utility vehicles and two rehab units.

WMVFC is an independent organization that falls under the auspice of the Baltimore County Fire Department. Members from the community dedicate their time training, providing emergency responses, fundraising, performing public fire safety education and community details.

Members are professionally trained by the Maryland Fire Rescue Institute, part of the University of Maryland. Members are trained emergency medical technicians, paramedics, rescue technicians and firefighters.

White Marsh Volunteer Fire Company and its members maintain a commitment to public safety education and outreach to the community to create a safer environment.

# OUR MISSION

WHITE MARSH VOLUNTEER FIRE  
COMPANY STRIVES TO SAFELY  
RESPOND TO THOSE IN NEED OF  
ASSISTANCE WITH **PROFESSIONALLY  
TRAINED PERSONNEL... EVERY CALL...  
EVERY HOUR... EVERY DAY.**

# OUR VISION

TO BE HIGHLY RELIABLE, WELL-  
TRAINED EMERGENCY RESPONDERS  
**ANSWERING THE NEEDS OF OUR  
COMMUNITY** AND COUNTRY WITH  
LONG-RANGE SUSTAINABILITY  
ACHIEVED **THROUGH DEDICATED  
MEMBERS, SOLID LEADERSHIP AND  
EFFECTIVE PLANNING.**

# Our Core Services

## **FIRE SUPPRESSION**

---

- ▶ Fire suppression
- ▶ Automobile crashes
- ▶ Hazardous conditions
- ▶ Emergency medical services first responder
- ▶ Operational support

## **EMERGENCY MEDICAL**

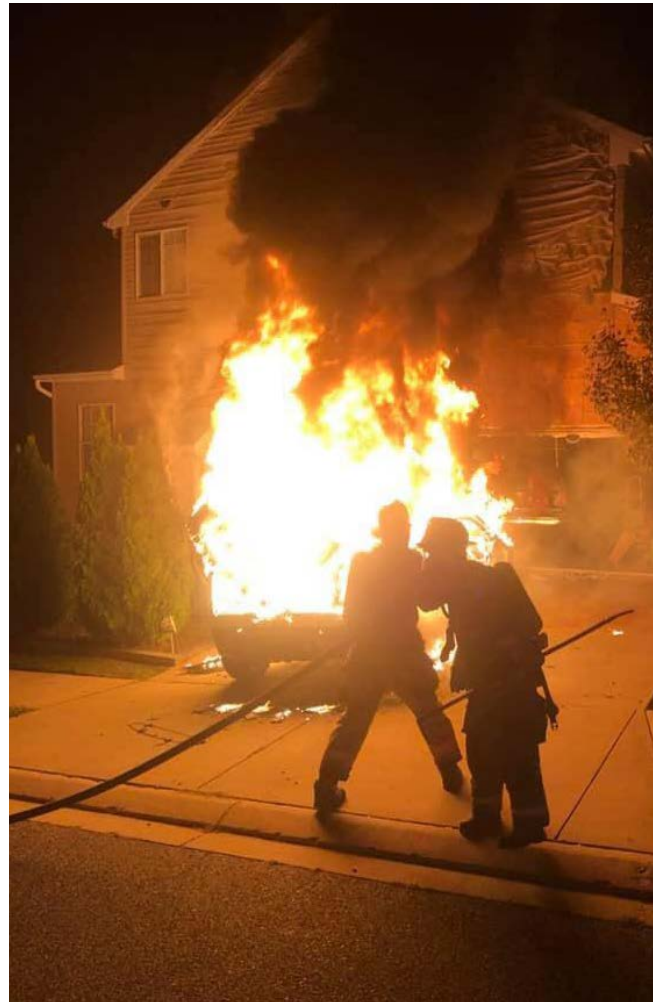
---

- ▶ Basic Life Support EMS ambulance transport
- ▶ Advanced Life Support EMS ambulance transport

## **FIRST RESPONDER REHAB AND CANTEEN**

---

- ▶ Rehab (heating, cooling, toilet) services for ongoing emergency operations
- ▶ Canteen (food and drink) services for ongoing emergency operations



# Our Constituents

- ▶ Financial supporters
- ▶ In-kind supporters
- ▶ Volunteer members
- ▶ Community board members
- ▶ Residential community members
- ▶ Business community members
- ▶ Commuters and travelers
- ▶ Community leaders
- ▶ Suppression service recipients
- ▶ EMS ambulance transport patients
- ▶ First responder partners



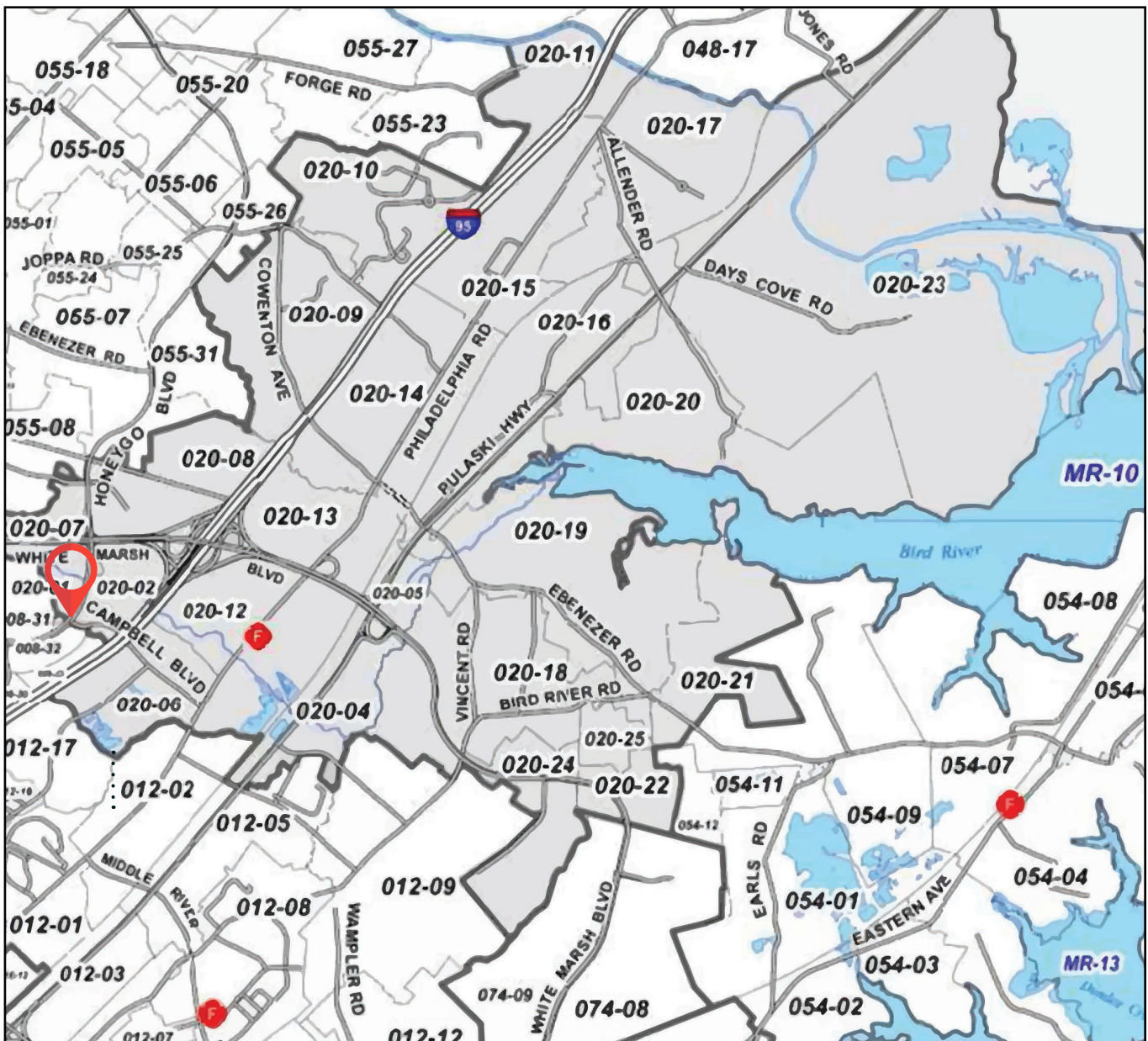
# Our First Due Coverage

## CAREER

- ▶ Fullerton (8)
- ▶ Middle River (12)
- ▶ Chase (54)
- ▶ Perry Hall (55)

## VOLUNTEER

- ▶ White Marsh (20)
- ▶ Kingsville (48)
- ▶ Middle River (74)





IN 2019,  
WE RESPONDED TO

**4202**

INCIDENTS

**2190**

MEDIC

**1879**

FIRE

**133**

REHAB



### TOP CALLS

SUPPRESSION: MOTOR VEHICLE ACCIDENTS  
EMS: CHEST PAIN/TROUBLE BREATHING



### BUSIEST LOCATION

20-02: HONEYGO AND CAMPBELL BLVDS



### BUSIEST DAY AND TIME

SATURDAYS BETWEEN 5 TO 6 P.M.

# Our 2019

White Marsh Volunteer Fire Company's year continued its on-going commitment to safely responding to those in need of assistance, public safety education and community outreach. These are just some of the company's milestones in 2019.



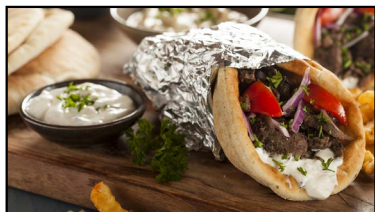
## January

White Marsh Volunteer Fire Company hosts career and volunteer first responders for electric safety training held by Baltimore Gas and Electric. It is one of many suppression and emergency medical training events held in 2019.



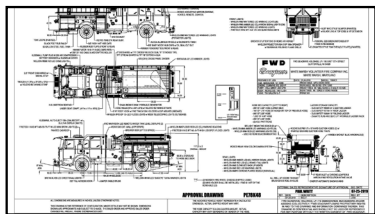
## March

The company marks one of its busiest months in 2019 with 391 responses (249 emergency medical, 135 suppression and seven rehab). By the end of the year, the company accumulated 4,202 responses.



## April

The company welcomes the community to its first Food Truck Tuesday. The weekly event through summer included rotating food trucks and live music performances.



## June

The Board of Directors approves the purchase of a new medic unit to replace Medic 203 and a new fire engine to replace Engine 201. M-203 is a 2013 unit that was purchased in 2014; E-201 is a 2003 unit that was purchased in 2014.



## September

Life member Donald Chilcoat Sr. passes away at age 85. "Daddy Don" dedicated more than 70 years of service to the Cowenton / White Marsh Volunteer Fire Company.



## November

A community tradition returns. After hundreds of hours over four weeks, White Marsh Volunteer Fire Company opens a 16-foot x 24-foot train garden with more than 100 animated items, six trains, a trolley and waterfalls.



# Our Apparatuses

WMVFC operates with eight emergency response units.

- ▶ **Medic 203**
  - ▶ 2015 International/Demers
  - ▶ BLS and ALS equipped
- ▶ **Engine 201**
  - ▶ 2001 American LaFrance
  - ▶ 1,250 gallons per minute pump
  - ▶ 500-gallon tank
- ▶ **Engine 202**
  - ▶ 2007 KME
  - ▶ 1,250 gallons per minute Hale pump
  - ▶ 1,000-gallon poly tank
- ▶ **Rehab 20**
  - ▶ 2002 Ford E350/Superior Bus
  - ▶ Full-service rehabilitation capabilities for first responders at the scene of an emergency (heating and cooling, toilet, seating)
- ▶ **Canteen 20**
  - ▶ 2012 Ford E450
  - ▶ Full-service mobile kitchen to provide food and drink to first responders at the scene of an emergency
- ▶ **Brush 204**
  - ▶ 2003 GMC/Knapheide 2500 Crew Cab 4x4
  - ▶ 150 gallons per minute pump
  - ▶ 200-gallon tank
- ▶ **Utility 205**
  - ▶ 2018 Chevrolet Silverado 4x4
- ▶ **Utility 206**
  - ▶ 2015 Chevrolet Suburban
  - ▶ EMS first responder and support

# Our Members

2019 was another great year for the White Marsh Volunteer Fire Company Human Resources Division. With the various units established in 2018, we were able to focus on goals, strategies and tactics for each unit, with successes on all fronts. At the end of the year, we had 200 members to include operational, administrative and life members. These members logged 63,000 hours in the station available for calls, with an additional 2,400+ hours in training to learn and hone their perishable skills.

## **New Member Unit:**

- ▶ 168 applications received
- ▶ 67 new members accepted

Once accepted into the company, new operational members must complete 20+ hours of introductory training and a physical exam before transferring to the fire, EMS or rehab staff where they complete their basic training.

Forty-three members successfully completed their initial membership requirements and were transferred to the fire, EMS, rehab or admin staff, with another 14 who were still working on their requirements as of the end of the year. This marks a significant increase from 2018 in the successful graduation from the New Member Unit.

## **Health and Wellness Unit:**

In the first half of the year, the Health and Wellness Unit worked with Dr. Jerry Jerome, Ph.D., from Towson University, who together created and implemented a fitness assessment for company members. During the summer, the unit brought in personal trainer Derrick Rivers to lead intense workouts for members. Unit coordinators provided fitness and nutritional tips for company members.

## **LOSAP/Statistics Unit:**

The Length of Service Award Program and Statistics Unit managed and calculated LOSAP statistics for all 200+ members on a quarterly and yearly basis.

# Our Finances

Fiscal Year  
July 1, 2018 - June 30, 2019

## CASH ON HAND

**\$235,326.60**

## LONG-TERM LIABILITIES

**\$2,070,491.00**

BUILDING, 2018 SILVERADO, REHAB UNIT

## INVESTMENT ACCOUNT

**\$12,383.05**

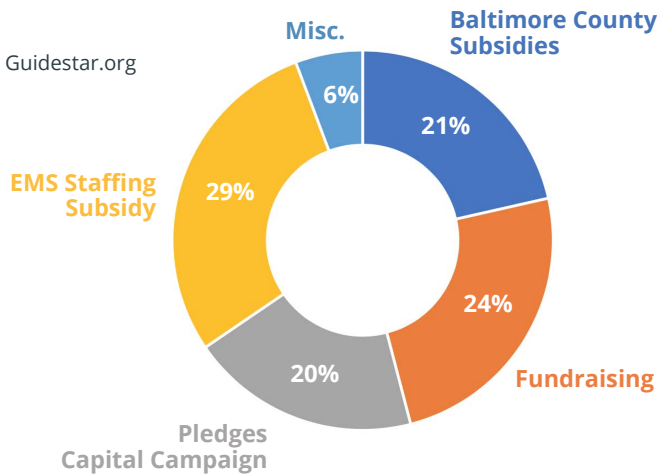
## FIXED ASSETS

**\$8,716,876.08**

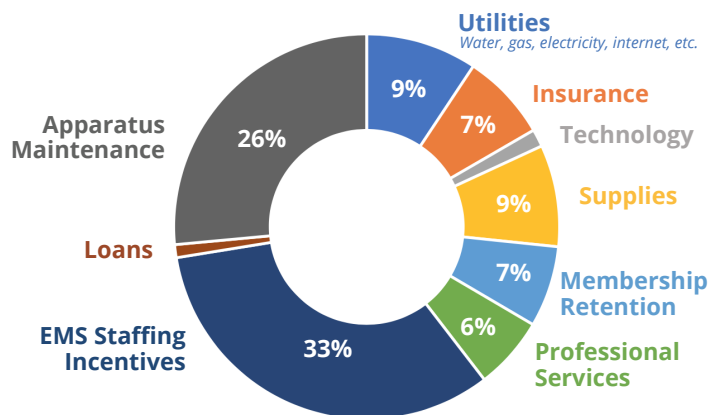
VALUE OF LAND, BUILDING, APPARATUS

## INCOME

IRS Form 990s are available at [Guidestar.org](http://Guidestar.org)



## EXPENSES



**10331 Philadelphia Road  
White Marsh, MD 21162  
410-933-0100 [wmvfc.org](http://wmvfc.org)**